



Covid-19 and the World of Work

Oregon Institute of Occupational Health Sciences at OHSU

PRESENTED BY: HELEN SCHUCKERS, MPH, DISSEMINATION SPECIALIST & RESEARCH ASSOCIATE
CONTRIBUTORS: DEDE MONTGOMERY, MS, CIH & ANJALI RAMESHBABU, PHD

Oregon Institute of Occupational Health Sciences is a free standing research institute at OHSU



Improving the lives of workers through biomedical and
occupational health research

Our Research Themes

4 main research areas includes:

- *Total Worker Health*[®] research
- Sleep and Shiftwork: Impact on health and safety
- Genome instability and human disease
- Injury treatment, recovery and prevention

Outreach efforts:

- *Partnerships*
- *Education & training*
- *Dissemination*

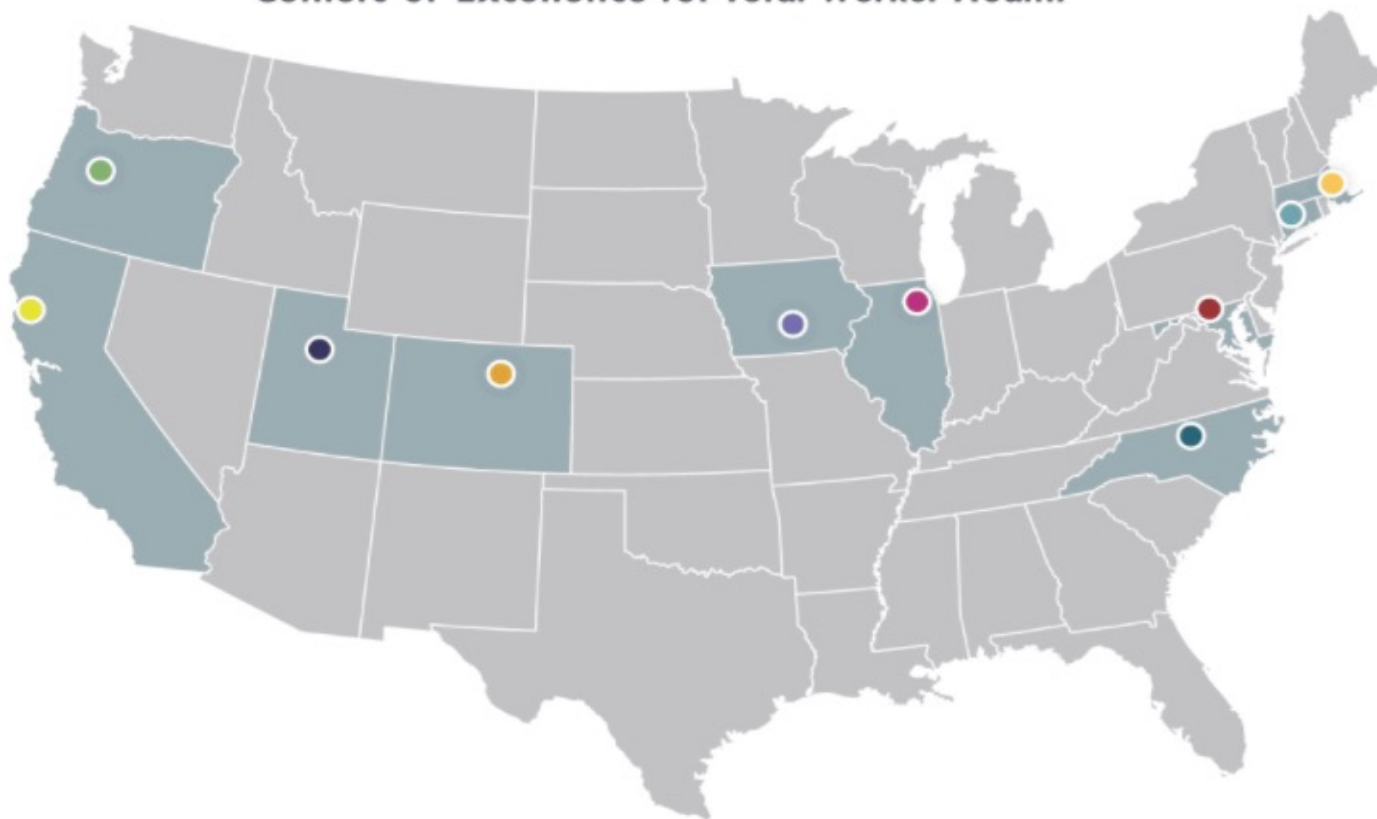
Oregon Healthy Workforce Center



Housed within the Oregon Institute of Occupational Health Sciences

National Institute for Occupational Safety and Health (NIOSH)
Centers of Excellence for *Total Worker Health*[®]

Centers of Excellence for *Total Worker Health*[®]



● California Labor Laboratory (CALL Center)

● Carolina Center for *Total Worker Health*[®] and Well-being

● Center for Health, Work & Environment

● Center for the Promotion of Health in the New England Workplace (CPH-NEW)

● Healthier Workforce Center of the Midwest

● Johns Hopkins P.O.E. *Total Worker Health*[®] Center in Mental Health (POE Center)

● Oregon Healthy Workforce Center (OHWC)

● The Harvard T.H. Chan School of Public Health Center for Work, Health & Well-being

● UIC Center for Healthy Work

● Utah Center for Promotion of Work Equity (U-POWER)



What is *Total Worker Health*[®]?

Policies, programs and practices that integrate protection from work-related safety & health hazards with promotion of injury and illness prevention efforts to advance worker well-being (NIOSH)

Learning Objectives

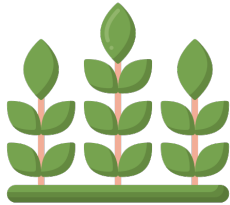
Explain the impact of COVID-19 in different workplace industries in Oregon and beyond

Describe communication strategies to reach stakeholders through *Total Worker Health*[®]

Identify tools and resources to improve workplace safety, health, and well-being

Explain the impact of COVID-19 in different workplace industries

Farmworkers



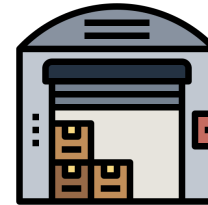
Estimated 173,000 migrant & seasonal farmers

Lack of hand-washing facilities & Personal Protective Equipment (PPE)

Loss wages and time at work

Living conditions and shuttles

Food Processing



15% of Oregon's workforce

Distance between workers & enclosed spaces

Shared surfaces and areas

Long working hours

Ride-share vans

Explain the impact of COVID-19 in different workplace industries

Construction



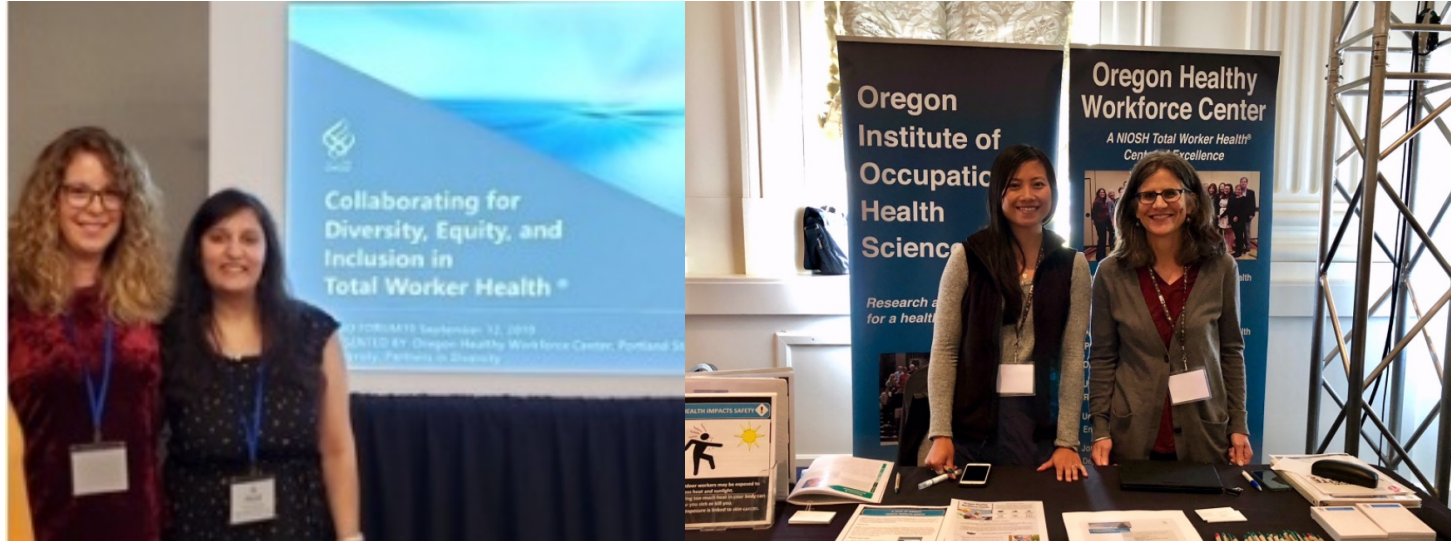
Contact tracing difficulties with subcontractors

Lack of hand-washing facilities & Personal Protective Equipment (PPE)

Fire resistant face coverings

High touch surfaces

Effective science & public health communication strategies and methods to reach stakeholders



Effective science & public health communication strategies and methods to reach stakeholders

What's Work Got To Do With It? Podcast

- Reshared talks from conferences & seminars
- Cross promoted on YouTube
- Over 6,600 plays in 40+ countries

The image shows a YouTube video player interface. The video title is "Farmworkers' Experiences During COVID-19" by the channel "What's Work Got To Do With It?". The video was uploaded 5 months ago and is categorized under "# Science". The video player shows a waveform and a progress bar at 27:35. Below the video player, there is a comment section with a "Write a comment" input field and buttons for "Like", "Share", "Copy Link", "Edit", and "More". The video has 157 views. Below the video player, there is a circular profile picture for "What's Work Got To Do With It?" and a description of the video content.

What's Work Got To Do With It? Farmworkers' Experiences During COVID-19 5 months ago # Science

Write a comment

Like Share Copy Link Edit More 157 More stats

What's Work Got To Do With It? Speaker: Reyna Lopez, PCUN Executive Director (she/they) Narrator: Helen Schuckers, MPH

Reyna Lopez's talk, "Essentially Forgotten?" was given at our Fall 2020 Spring Symposium where she addressed the impacts of COVID19 on the Latinx farm working community.

Reyna Lopez is a leader and proud daughter of immigrants from Mexico, who came to Oregon in the late

Effective science & public health communication strategies and methods to reach stakeholders

Oregon and the Workplace Blog

- Building email subscriber list
- Avg. 1,000 views each per COVID blog post
- 40 + blog posts on COVID



Oregon and the Workplace

OHSU

[Home](#) [About](#) [What we do](#) [Blog Authors](#)

4 key strategies to help supervisors support employee well-being during COVID-19




By [Leslie Hammer, PhD](#) and [Lindsey Alley, MS](#)

Maintaining work-life balance has never been more important – or *more challenging* – than it is right now. The compounding effects of the COVID-19 crisis continue to affect our physical, social, psychological, and economic well-being. We don't yet know what our new "normal" will be or how large an impact the pandemic will have in the end.

What we do know for sure is that the pandemic is having significant impacts on individuals' ability to earn income, educate and provide care for their children, maintain their own and their family's physical and mental health, and obtain basic necessities. We also know that for some, such as our critical first-responders in healthcare, police, fire, military, and everyone who is working to keep our lives going in these difficult times, the risks of stress, burnout, and negative health outcomes are


Effective science & public health communication strategies and methods to reach stakeholders

Jul 21



Learning from different industries to improve safety, health, and well-being at work

Oregon Healthy Workforce Center
Improving the safety, health and well-being of workers through Total Worker Health research, dissemination, outreach and education. Visit, www.YourWorknath.com



Each industry has a unique set of workplace conditions, factors, environmental and occupational hazards, as well as organizational policies and practices that require careful planning to ensure the safety, health, and well-being of employees.

During the
scieniers at

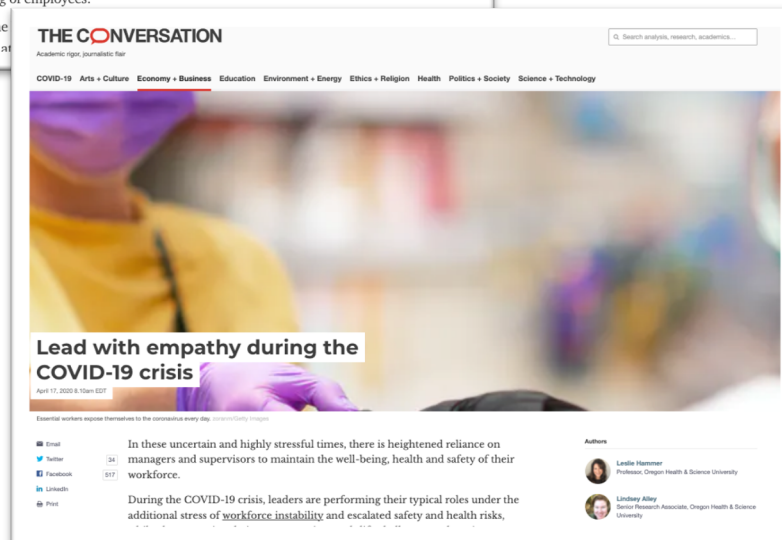
OREGON HEALTHY WORKFORCE CENTER FOLLOWS

- Healthy Work Now
- Lindsay Gray
- Yasmin Tayag
- Leslie Hammer, PhD
- Katia M Costa-Black

See all (9)

Popular media

- Expanded to Medium.com & The Conversation
- Teamed up with OHSU media relations to expand reach to local news outlets
- Expand national audience



THE CONVERSATION
Academic rigor, journalistic fair

COVID-19 Arts + Culture Economy + Business Education Environment + Energy Ethics + Religion Health Politics + Society Science + Technology

Lead with empathy during the COVID-19 crisis

April 17, 2020 & 10am EDT

Essential workers expose themselves to the coronavirus every day. [View on Getty Images](#)

In these uncertain and highly stressful times, there is heightened reliance on managers and supervisors to maintain the well-being, health and safety of their workforce.

During the COVID-19 crisis, leaders are performing their typical roles under the additional stress of [workforce instability](#) and escalated safety and health risks.

Authors

- Leslie Hammer
Professor, Oregon Health & Science University
- Lindsay Alley
Senior Research Associate, Oregon Health & Science University

Effective science & public health communication strategies and methods to reach stakeholders

COVID Conversations Virtual Events

- Hosted 10 sessions 30-min each
- Invited occupational health nurses to talk about the workplace challenges during COVID
- Sharing of strategies
- Topic examples: Pandemic & urban parks, restaurants, EAP, poultry processing, manufacturing, and hospital staff

Effective science & public health communication strategies and methods to reach stakeholders

Video Stories – NEW 2022

- 1 to 2 min videos
- Share stories & research
- Engaging content for social channels



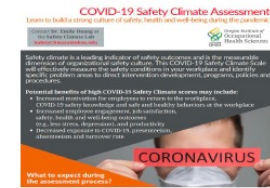
Occupational safety, health & well-being tools and resources



COVID and the World of Work
A resource page sharing evidence-based and curated content, such as videos, trainings, articles, and resources for workforce safety, health, and well-being during the pandemic



Pandemic Response Training for Supervisors /Managers
10 minute online leadership training to provide supervisor and managers with evidence-based strategies to support their workers during the pandemic



COVID-19 Safety Climate Survey
One of the first COVID Safety Climate assessments designed to help organizations evaluate culture, predict outcomes and promote safety and health of employees as they return to work



Oregon COVID-19 Construction Task Force Web Page
Resources developed by the task force to share best practices to help reduce exposure hazards and prevent COVID-19 infection within construction operations



Lead with Empathy during the COVID-19 Crisis
Published news article on the importance of supervisors/managers role modeling self care and how they can support their workforce's well-being



Worker well-being during COVID Video
OHWC Outreach Director, Dede Montgomery discusses a Total Worker Health approach to COVID-19 and the workplace

Select Partnering Organizations across Research Projects, 2011-2020

 <p>BOLI</p>	 <p>OREGON Home Care COMMISSION</p>	 <p>lines <i>for</i> life Preventing Substance Abuse & Suicide</p>	 <p>oec oregon employer council</p>
 <p>PORTLAND PARKS & RECREATION™ Healthy Parks, Healthy Portland</p>	 <p>ATU LOCAL 757 PORTLAND OREGON ESTABLISHED 1947</p>	 <p>Oregon Department of Veterans' Affairs</p>	 <p>Mortenson</p>
 <p>PORTLAND WATER BUREAU FROM FOREST TO FAUCET</p>	 <p>O[yes] Oregon young employee safety</p>	 <p>HIRE OUR HEROES</p>	 <p>saif corporation</p>
 <p>PBOT PORTLAND BUREAU OF TRANSPORTATION</p>	 <p>SEIU 503 IN IT TOGETHER</p>	 <p>VRC Veterans Resource Center</p>	 <p>FORTIS CONSTRUCTION INC.</p>
 <p>Portland General Electric</p>	 <p>PYB PORTLAND YOUTH BUILDERS</p>	 <p>Oregon National Guard Courage and Commitment</p>	 <p>Linn-Benton COMMUNITY COLLEGE</p>

Where can I find OHWC workplace safety, health & well-being toolkits and tools?

DOWNLOAD TOOLS & TOOLKITS

SEARCH

QUESTIONS? CALL 503.494.2425

MENU

YourWorkpath
An Oregon Healthy Workforce Center Resource

Travel YourWorkpath to arrive at better employee safety, health, and well-being.

Get the tools, toolkits and resources you need to build a culture of safety, health, and well-being for your employees.

LEARN MORE

YourWorkpath

TOOLS
This robust collection of tools has something for everyone looking to enhance safety and health in the workplace.
VIEW TOOLS

TOOLKITS
Proven Total Worker Health® toolkits focusing on safety, health, and well-being are ready for you to launch with your team.
VIEW TOOLKITS

GUIDANCE
Not sure where to start? We're ready to help you find the tools and programs to fit your unique needs.
GET HELP

visit, YourWorkpath.com

Monthly Drop-in Sessions to learn about our Tools and Toolkits is offered the last Tuesday each month at 9 – 10am PT

The image shows a screenshot of an Eventbrite event page. On the left is a vertical sidebar with the 'YourWorkpath' logo and event details. The main content area on the right displays the event title, date, and a 'Drop In Session RSVP' button. Below the button, it says 'Free' and 'Sales end on Feb 23, 2021'. At the bottom right of the main area is a 'Register' button. The sidebar contains the following text:

Workplace Safety, Health and Well-Being Tool and Toolkits Tour

About this Event

Join OHWC Dissemination Specialist, Helen Schuckers from the Oregon Healthy Workforce Center's (OHWC) for a "Toolkit and Tools Tour" to learn about our center's workplace safety, health and well-being resources featured on YourWorkpath.com.

All organizations are welcome to join in on this drop-in monthly session. This drop-in virtual meeting takes place the last Tuesday of each month from 9:00am to 10:00am PT. Please RSVP through this event page.

Please email schucker@ohsu.edu with any questions.

The drop-in session will cover

- Access for organizations to learn more about Oregon Healthy Workforce Center workplace safety, health and well-being tools and toolkits
- Ask specific questions about YourWorkpath.com and YourWorkpath Program and resources
- Learn more about Total Worker Health and OHWC

Visit, YourWorkpath.com/tryourtoolkits

Virtual Fall Symposium: Work-Life Challenges and Integration in the Context of COVID

Date: Friday, November 19, 2021
Time: 9 AM - 2:30 PM // **Cost:** \$20

9:15 - 10:00 AM Keynote: Creating an Equitable Workplace for Today's Workers to Thrive



10:00-10:45 AM: Designing Flexible Work to Create a Just Economy for Black and Latinx Women



11:00 - 11:45 AM: Work-family Management and Remote Work in the Time of COVID-19



11:45 - 12:45: Lunch/Break on your own



12:45 - 1:00 PM: Supporting Low-Wage, Essential Workers' Nonwork Life in the Context of COVID-19



1:00 - 2:00 PM: Panel Discussion - Mandatory Essential Work, Fairness and Compensation



2:00 - 2:30 PM: Discussion, Questions and Recap



Total Worker Health[®] Fundamentals

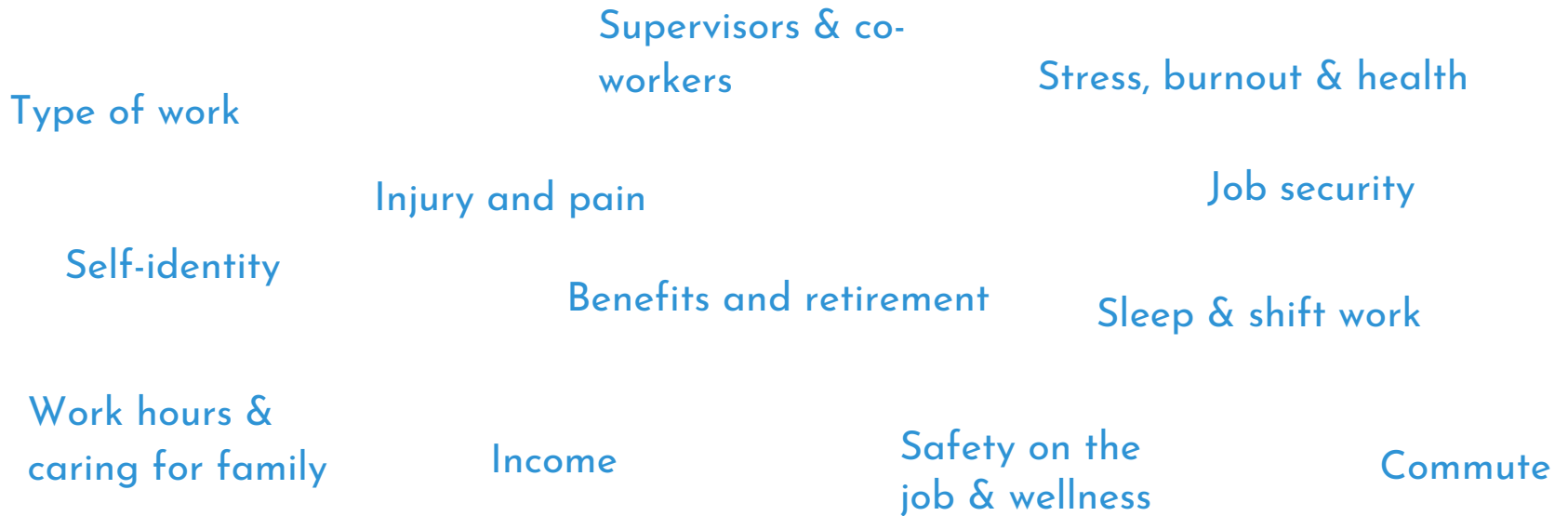
Fundamentals of Total Worker Health[®] Approaches

Essential Elements for Advancing
Worker Safety, Health, and Well-Being



1. Demonstrate leadership commitment to safety and health at all levels
2. Design work to eliminate or reduce safety and health hazards & promote worker well-being
3. Promote and support worker engagement through program design and implementation
4. Ensure confidentiality and worker privacy
5. Integrate relevant systems to advance worker well-being

It's all connected...



What happens at work doesn't stay at work

Helen Schuckers, MPH
Dissemination Specialist
schucker@ohsu.edu



facebook.com/occhealthsci.ohsu



twitter.com/OHSUOccHealth



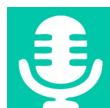
linkedin/company/occhealthsci



ohsu.edu/ohwc



yourworkpath.com (*tools and toolkits*)



soundcloud.com/occhealthsci



blogs.ohsu.edu/occupational-health-sciences